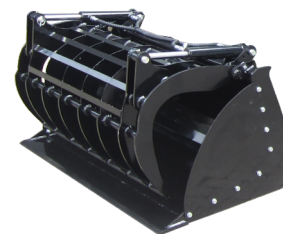


PRODUCT INFORMATION

PELIKAANBAK

RECYCLING



These pelican buckets recycling come standard with a Hardox wear plate. The required connection of this attachment is 1x DW hydraulic function

ROBUST ATTACHMENT

The GIANT Pelican bucket recycling is a robust and multifunctional attachment, specially designed for efficient handling of recyclable material such as green waste, wood residues, construction debris and other bulk streams. This version is based on the well-known pelican bucket with bolted teeth, but optimized for the tougher conditions in the recycling sector.

| Version | Width mm | ISO contents L | Weight kg | Cylinders # | Clamp teeth # | Skid | G1200 | G1500 | G2200E | G2300 | G2500 | G2700 | G2700E | G3500 | G5000 | GT5048 | Article number |
|----------------------|-------------|-----------------------------|--------------|----------------|---------------------|------|-------|-------|--------|-------|-------|-------|--------|-------|-------|--------|-----------------------|
| GA300 | 1.200 | 343 | 255 | 2 | 8 | × | × | ✓ | ✓ | ✓ | ✓ | ✓ | ✓ | × | × | × | 6106140 |
| GA300 | 1.300 | 373 | 276 | 2 | 8 | × | × | × | ✓ | ✓ | ✓ | ✓ | ✓ | × | × | × | 6106223 |
| GA300 | 1.400 | 403 | 290 | 2 | 8 | × | × | × | ✓ | ✓ | ✓ | ✓ | ✓ | ✓ | × | × | 6106240 |
| GA300 | 1.500 | 434 | 305 | 2 | 9 | × | × | × | × | × | ✓ | ✓ | ✓ | ✓ | × | × | On request |
| GA300 | 1.600 | 464 | 320 | 2 | 9 | × | × | × | × | × | ✓ | ✓ | ✓ | ✓ | × | ✓ | 6106365 |
| Option | | Suitable for version | | | | | | | | | | | | | | | Article number |
| Side walls (per set) | | GA300 | | | | | | | | | | | | | | | 6106505 |