

# PRODUCT INFORMATION

## MODEL G1100 TELE

### Product information

Engine type	Kubota D722 (3 cylinder)
Engine power	20,3 HP / 14,9 kW
Driving mechanism	Hydrostatic four wheel drive with automotive control Drive back and forward through electrical switch 4 heavy Poclain wheel engines and 6.500 N pulling force Electric controlled slip differential
Driving hydraulics	65 ltr/min (300 bar)
Working hydraulics	28 ltr/min (180 bar)
Tyres	23x8.50-12 AS • Total machine width: 92 cm
Driving speed	0-15 km/h • Measured on standard tyres
Standard version	ROPS / FOPS safety roof • Incl. safety doors (L+R) Luxury seat • Incl. safetybelt, armrest and extended backrest Extension and retraction of the lifting arm, next to the joystick Parallelgeleiding op hefarm • Door compensatiecilinder Parallel guidance on lifting arm • By compensating cylinder 1x Double acting hydraulic function on lifting arm, mechanical Floating position on lifting cylinder(s) Main switch Shunt coupling Oil cooler
Hitch	GIANT Compact mechanical quick change system
Parking brake	Hydraulic multidisk brake
Colour	GIANT yellow / GIANT grey / black

### Tyres

6.5/80-12 AS (87,5 cm); <i>Only possible in combination with narrowed mudguards</i>
23x8.50-12 SKID (96 cm)
23x8.50-12 GRASS (96 cm)
23x10.50-12 AS (110 cm)
23x10.50-12 GRASS (110 cm)
24x12.00-12 AS (122 cm)
24x13.00-12 GRASS (122 cm)
Twin wheels: 23x8.50-12 AS (2 pcs); <i>Only possible in combination with 23x8.50-12 AS</i>

### Hydraulic connections front

Extra additional double-acting hydraulic functions, electrically or mechanically operated
Tandem pump, front • Includes 1x extra single-acting hydraulic function • Only possible in combination with free return • Max. 28 ltr/min at 150 bar • Electrically switchable
Case drain at front
Free hydraulic return at front

**More information about the G1100 TELE on the next page.**



### Technical data

Service weight <sup>1</sup>	1.200 kg
Lifting capacity	750 kg
Tipping load <sup>2</sup>	See chart
Lifting height <sup>2,3</sup>	2.820 mm
Length without bucket	2.240 mm
Width <sup>3</sup>	920 mm
Clearance height <sup>3,4</sup>	2.060 mm

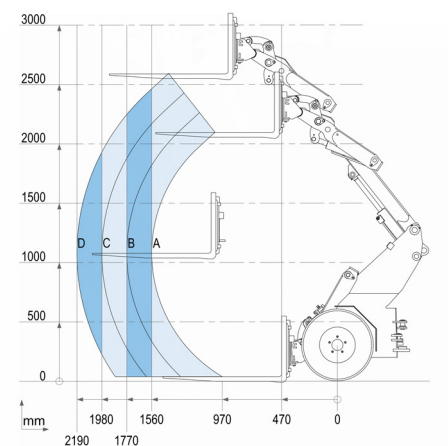
<sup>1</sup> Measured with earthbucket

<sup>2</sup> Measured on hinge point in straight position

<sup>3</sup> Measured on standard tyres

<sup>4</sup> Measured with standard safety roof

### Tipping loads



	Standard version	With counter-weight 70 kg (option)
A	695 kg	755 kg
B	613 kg	665 kg
C	548 kg	595 kg
D	495 kg	538 kg

### Electrical / Lighting

Various work lights available in LED or halogen

Flashing/warning light and halogen

Flashers LED

## Hydraulic connections at the back

---

1x extra double acting hydraulic function, mechanical

---

Tandem pump, rear

- Includes 1x extra single-acting hydraulic function
  - Only possible in combination with free return
  - Max. 28 ltr/min at 150 bar
  - Electrically switchable
- 

Case drain

---

Free hydraulic return

---

## Towbars and counterweights

---

Shunt coupling (standard) + Tow ball

---

Counterweight (70 kg) at the back

---