

PRODUCT INFORMATION

MODEL G1200 TELE

Product information

Engine type	Kubota D902 (3 cylinder)
Engine power	25,2 HP / 18,5 kW
Driving mechanism	Hydrostatic four wheel drive with automotive control Drive back and forward through electrical switch 4 heavy Poclain wheel engines and 7.000 N pulling force Electric controlled slip differential
Driving hydraulics	65 ltr/min (300 bar)
Working hydraulics	28 ltr/min (180 bar)
Tyres	23x8.50-12 AS • Total machine width: 92 cm
Driving speed	0-15 km/h • Measured on standard tyres
Standard version	ROPS / FOPS safety roof • Incl. safety doors (L+R) Luxury seat • Incl. safetybelt, armrest and extended backrest Extension and retraction of the lifting arm, mechanical controlled by lever next to the joystick Parallel guidance on lifting arm • By compensating cylinder 1x Double acting hydraulic function on lifting arm, mechanical Floating position on lifting cylinder(s) Main switch Shunt coupling Oil cooler Lifting eyes
Hitch	GIANT Compact mechanical quick change system
Parking brake	Hydraulic multidisk brake
Colour	GIANT yellow / GIANT grey / black

Tyres

6.5/80-12 AS (87,5 cm); Alleen mogelijk in combinatie met versmalde spatborden
23x8.50-12 SKID (96 cm)
23x8.50-12 GRASS (96 cm)
23x10.50-12 AS (110 cm)
23x10.50-12 GRASS (110 cm)
24x12.00-12 AS (122 cm)
24x13.00-12 GRASS (122 cm)
Dubbele banden: 23x8.50-12 AS (2 stuks); Alleen mogelijk in combinatie met 23x8.50-12 AS

Hydraulic connections front

Extra additional double-acting hydraulic functions, electrically or mechanically operated
Tandem pump, front
• Includes 1x extra single-acting hydraulic function
• Only possible in combination with free return
• Max. 39 ltr/min at 150 bar
• Electrically switchable
additional function
Case drain
Free hydraulic return

More information about the G1200 TELE on the next page.



Technical data

Service weight ¹	1.200 kg
Lifting capacity	750 kg
Tipping load ²	See chart
Lifting height ^{2, 3}	2.820 mm
Length without bucket	2.240 mm
Width ³	920 mm
Clearance height ^{3, 4}	2.060 mm

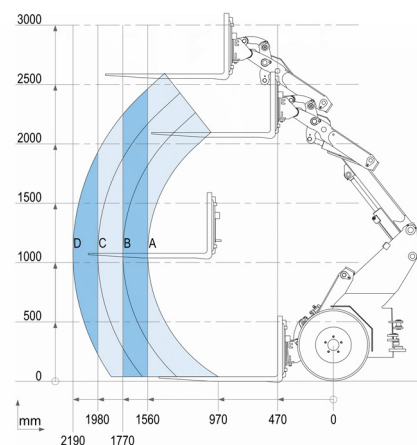
¹ Measured with earthbucket

² Measured on hinge point in straight position

³ Measured on standard tyres

⁴ Measured with standard safety roof

Tipping loads



	Standard version	With counter-weight 70 kg (option)
A	695 kg	755 kg
B	613 kg	665 kg
C	548 kg	595 kg
D	495 kg	538 kg

Hydraulic connections at the back

Extra double acting hydraulic function, electric or mechanical served

Tandem pump, rear

- Includes 1x extra single-acting hydraulic function
 - Only possible in combination with free return
 - Max. 39 ltr/min at 150 bar
 - Electrically switchable
-

Case drain

Free hydraulic return

Towbars and counterweights

Shunt coupling (standard) + Tow ball

Counterweight (70 kg) at the back

Other options

HD driving mechanism with 12.000 N pulling force

Higher driving speed (0-19 km/h); Not possible in combination with HD driving mechanism

Electrical / Lighting

Various work lights available in LED or halogen

Flashing/warning light LED and halogen

Flashers LED
