

# PRODUCT INFORMATION

## MODEL G2200E TELE

### Product information

Battery	LFP battery (Lithium iron phosphate) 13,3 kWh / 260 Ah / 48V (195 kg)
Driving mechanism	Electric four wheel drive with cardan shaft and 12.500 N pulling force
Working hydraulics	35 ltr/min (170 bar)
Tyres	10.0/75x15.3 AS • Total machine width: 108 cm
Driving speed	3-speed (0-4,5 km/h, 0-12 km/h, 0-18 km/h) • Measured on standard tyres
Standard version	ROPS / FOPS safetyroof • Incl. safety doors (L+R)  Mechanically suspended seat • Incl. safety belt, armrest and extended backrest  1x Double acting hydraulic function on lifting arm, mechanical  Hose rupture protection on lift cylinder  Working light (LED) front, on lifting arm  Shunt coupling
Hitch	GIANT Standard hydraulic quick change system
Parking brake	Drum brakes
Colour	GIANT yellow / GIANT grey / black

### Tyres

27x10.50-15 SKID (116 cm)
29x12.50-15 GRASS (123 cm)
31x15.50-15 AS (128 cm)
31x15.50-15 X-TRAC (128 cm)
31x15.50-15 SKID (128 cm)
31x15.50-15 GRASS (135 cm)
Twin wheels: 10,0/75x15,3 AS (2 pcs); Only possible in combination with 10,0/75x15,3 AS

### Safetyroof

ROPS / FOPS foldable safety roof
ROPS / FOPS cabin

### Hydraulic connections front

Extra double acting hydraulic function, proportional of mechanical served
Case drain
Free hydraulic return

### Electrical / Lighting

Various 12-volt connections
Various work lights available in LED
Flashing/warning light LED
Flashers LED

### Towbars and counterweights

Shunt coupling + Tow ball
Counterweight (40 kg) under chassis (Max. 2 pcs)



### Technical data

Service weight <sup>1</sup>	2.300 kg
Lifting capacity	See chart
Tipping load <sup>2</sup>	See chart
Lifting height <sup>2, 3</sup>	3.395 mm
Length without bucket	3.060 mm
Width <sup>3</sup>	1.080 mm
Clearance height <sup>3, 4</sup>	2.300 mm

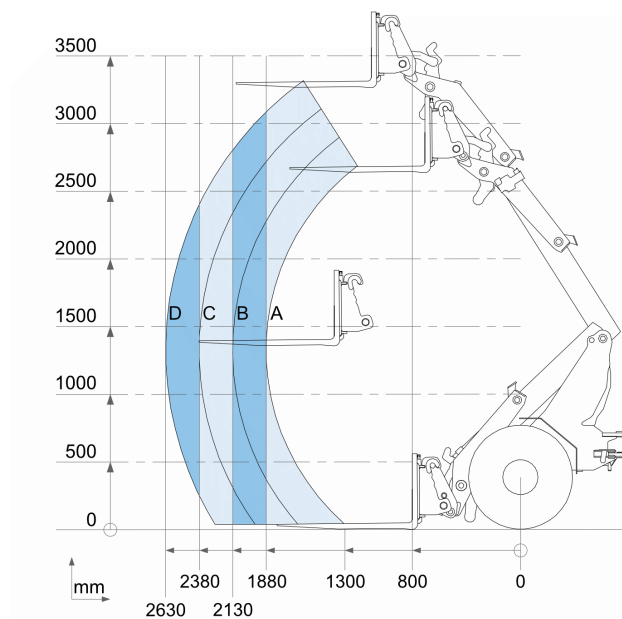
<sup>1</sup> Measured with standard version and earthbucket

<sup>2</sup> Measured on hinge point in straight position

<sup>3</sup> Measured on standard tyres

<sup>4</sup> Measured with standard safety roof

### Tipping loads



	Standard version	With counterweight 80 kg (option)
A	1.120 kg	1.210 kg
B	989 kg	1.068 kg
C	885 kg	956 kg
D	801 kg	865 kg