

PRODUCT INFORMATION

MODEL G2700E TELE



Product information

Battery	LFP battery (Lithium iron phosphate) 13,3 kWh / 260 Ah / 48V (195 kg)
Driving mechanism	Electric four wheel drive with cardan shaft and 12.500 N pulling force
Working hydraulics	40 ltr/min (230 bar)
Tyres	10.0/75x15.3 AS • Total machine width: 108 cm
Driving speed	3-speed (0-5 km/h, 0-12 km/h, 0-18 km/h) • Measured on standard tyres
Standard version	ROPS / FOPS safetyroof • Incl. safety doors (L+R) Mechanically suspended seat • Incl. safety belt, armrest and extended backrest 1x Double acting hydraulic function on lifting arm, mechanical Hose rupture protection on lift cylinder Working light (LED) front, on lifting arm Shunt coupling
Hitch	GIANT Standard hydraulic quick change system
Parking brake	Drum brakes
Colour	GIANT yellow / GIANT grey / black

Tyres

31x15.50-15 AS (139 cm)
31x15.50-15 X-TRAC (140 cm)
31x15.50-15 SKID (140 cm)
31x15.50-15 GRASS (139 cm)
33x15.50-15 X-TRAC (136 cm)
15.0/55x17 AS (136 cm)
425/40B17 GSP (142 cm)
Twin wheels: 11.5/80-15.3 AS (2 pcs)
• Only possible in combination with 11.5/80-15.3 AS

Safetyroof / Cabin

ROPS / FOPS cabin

Hydraulic connections front

Extra double acting hydraulic function, mechanical operated
Case drain
Free hydraulic return

Electrical / Lighting

Various 12-volt connections
Various work lights available in LED
Flashing/warning light LED
Flashers LED

Other options

STABILO systeem (Patented); Stabilizes the articulated pendulum joint of the machine

Technical data

Service weight ¹	2.695 kg
Lifting capacity	2.200 kg
Tipping load ²	See chart
Lifting height ^{2, 3}	3.711 mm
Length without bucket	3.590 mm
Width ³	1.080 mm
Clearance height ^{3, 4}	2.340 mm

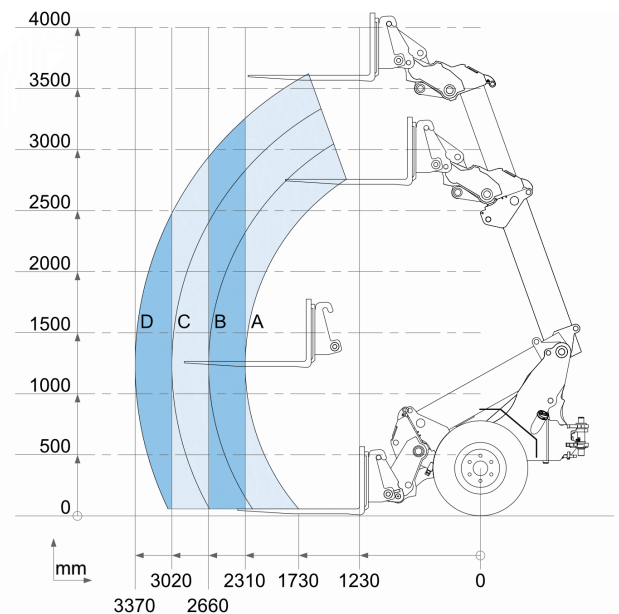
¹ Measured with earthbucket

² Measured on hinge point in straight position

³ Measured on standard tyres

⁴ Measured with standard safety roof

Tipping loads



Standard version	
A	1.550 kg
B	1.346 kg
C	1.186 kg
D	1.062 kg

Towbars and counterweights

Shunt coupling (standard) + Tow ball
Counterweight (40 kg) under chassis (max. 3 pcs.)