

PRODUCT INFORMATION

MODEL G2700E TELE HD

Product information

Battery	LFP battery (Lithium iron phosphate) 13,3 kWh / 260 Ah / 48V (195 kg)
Driving mechanism	Electric four wheel drive with cardan shaft 10 tons planetary axles with 16.000 N pulling force electrical differential lock on front axle
Working hydraulics	40 ltr/min (230 bar)
Tyres	11.5/80x15.3 AS • Total machine width: 115 cm
Driving speed	3-speed (0-5 km/h, 0-12 km/h, 0-17 km/h) • Measured on standard tyres
Standard version	ROPS / FOPS safetyroof • Incl. safety doors (L+R) Mechanically suspended seat • Incl. safety belt, armrest and extended backrest 1x Double acting hydraulic function on lifting arm, mechanical Hose rupture protection on lift cylinder Working light (LED) front, on lifting arm Shunt coupling
Hitch	GIANT Standard hydraulic quick change system
Parking brake	Drum brakes
Colour	GIANT yellow / GIANT grey / black

Tyres

31x15.50-15 AS (135 cm)
31x15.50-15 X-TRAC (136 cm)
31x15.50-15 SKID (136 cm)
31x15.50-15 GRASS (135 cm)
33x15.50-15 X-TRAC (140 cm)
15.0/55x17 AS (133 cm)
480/45x17 AS (148 cm)
420/55-17 AS (140 cm); Not possible in combination with mudguard wideners
425/55-R17 AS (radial) (138 cm)
425/55-R17 Ridemax (radial) (138 cm); Not possible in combination with mudguard wideners
425/40B17 GSP (139 cm)
440/50-R17 AG (radiaal) (141 cm)
500/40x17.5 Flota 3 (150 cm); Not possible in combination with mudguard wideners
Twin wheels: 11.5/80-15.3 AS (2 pcs); Only possible in combination with 11.5/80-15.3 AS

Safetyroof / Cabin

ROPS / FOPS foldable safety roof
ROPS / FOPS cabin

More information about the G2700E TELE HD on the next page.



Technical data

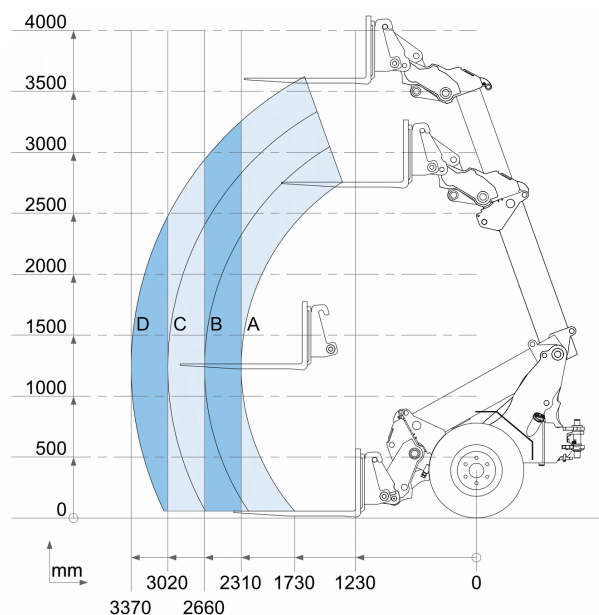
Service weight ¹	2.695 kg
Lifting capacity	2.200 kg
Tipping load ²	See chart
Lifting height ^{2, 3}	3.711 mm
Length without bucket	3.590 mm
Width ³	1.150 mm
Clearance height ^{3, 4}	2.340 mm

¹ Measured with earthbucket

² Measured on hinge point in straight position

³ Measured on standard tyres

⁴ Measured with standard safety roof



	Standard version
A	1.550 kg
B	1.346 kg
C	1.186 kg
D	1.062 kg

Hydraulics at the front

Extra additional double-acting hydraulic functions, mechanically operated

Case drain

Free hydraulic return

Towbars and counterweights

Combination towing hook

Shunt coupling (standard) + Tow ball

Counterweight (40 kg) under chassis (max. 3 pcs.)

Electrical / Lighting

Various 12 Volt socket

Various working lights available in LED

Flashing/warning light in LED

Flashers in LED

Other options

STABILO system (Patented); Stabilizes the articulated pendulum joint of the machine

Oil cooler
