

PRODUCT INFORMATION

MODEL G2700 TELE HD

Product information

Engine type	Kubota D1803 CR (3 cilinder) Stage V
Engine power	50,4 HP / 37,0 kW
Driving mechanism	Hydrostatic four wheel drive with automotive control 8 tons planetary axles (HD version) with 20.000 N pulling force Limited slip on both axles
Driving hydraulics	75 ltr/min (420 bar)
Working hydraulics	51 ltr/min (230 bar)
Tyres	11.5/80-15.3 AS • <i>Total machine width: 110 cm</i>
Driving speed	2-speed (0-10 km/h, 0-25 km/h) • <i>Measured on standard tyres</i>
Standard version	ROPS / FOPS safety roof • <i>Incl. safety doors (L+R)</i> Mechanically suspended seat • <i>Incl. safety belt and armrest</i> 1x Double acting hydraulic function on lifting arm, mechanical Main switch Shunt coupling Oil cooler
Hitch	GIANT Standard hydraulic quick change system
Parking brake	Drum brakes
Colour	GIANT yellow / GIANT grey / black

Tyres

31x15.50-15 AS (131 cm)
31x15.50-15 X-TRAC (136 cm)
31x15.50-15 SKID (132 cm)
31x15.50-15 GRASS (131 cm)
33x15.50-15 X-TRAC (136 cm)
15.0/55x17 AS (130 cm)
425/40B17 GSP (135 cm)
Twin wheels: 11.5/80-15.3 AS (2 pcs); Only possible in combination with 11.5/80-15.3 AS

Hydraulic connections front

Up to 2 additional double-acting hydraulic functions, mechanically operated
Tandem pump, front
• Includes 1x extra single-acting hydraulic function
• Only possible in combination with free return
• Max. 60 ltr/min at 150 bar
• Electrically switchable
Case drain
Free hydraulic return

Electrical / Lighting

Various 12-volt connections
Various work lights available in LED or halogen
Flashing/warning light LED and halogen
Flashers LED

More information about the G2700 TELE HD on the next page.



Technical data

Service weight ¹	2.950 kg
Lifting capacity	2.325 kg
Tipping load ²	See chart
Lifting height ^{2, 3}	3.711 mm
Length without bucket	3.680 mm
Width ³	1.100 mm
Clearance height ^{3, 4}	2.340 mm

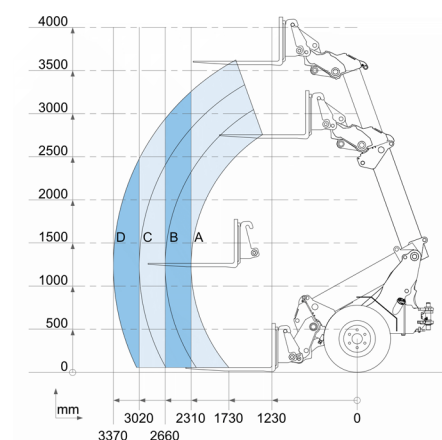
¹ Measured with standard version and earthbucket

² Measured on hinge point in straight position

³ Measured on standard tyres

⁴ Measured with standard safety roof

Tipping loads



	Standard version	With counter-weight 125 kg (option)
A	1.587 kg	1.702 kg
B	1.378 kg	1.478 kg
C	1.214 kg	1.302 kg
D	1.088 kg	1.167 kg

Safetyroof / Cabin

ROPS / FOPS cabin

Hydraulic connections at the back

Extra double acting hydraulic function, mechanical operated

Tandem pump, rear

- Includes 1x extra single-acting hydraulic function
- Only possible in combination with free return
- Max. 60 ltr/min at 150 bar
- Electrically switchable

Case drain

Free return

Other options

Pro-inching

STABILO systeem (patented); Stabilizes the articulated pendulum joint of the machine

Towbars and counterweights

Shunt coupling (standard) + Tow ball

Counterweight 62 kg (max. 2 pcs) under machine
