

PRODUCT INFORMATION

MODEL G2700 TELE HD+

Product information

Engine type	Kubota D1803 CR (3 cilinder) Stage V
Engine power	50,4 HP / 37,0 kW
Driving mechanism	Hydrostatic four wheel drive with automotive control 12 tons planetary axles (HD version) with 28.000 N pulling force 100% electrical differential lock on both axles
Driving hydraulics	121 ltr/min (400 bar)
Working hydraulics	51 ltr/min (230 bar)
Tyres	11.5/80-15.3 AS • Total machine width: 114 cm
Driving speed	2-speed (0-10 km/h, 0-30 km/h) • Measured on standard tyres
Standard version	ROPS / FOPS safety roof • Incl. safety doors (L+R) Mechanically suspended seat • Incl. safety belt and armrest 1x Double acting hydraulic function on lifting arm, mechanical Main switch Shunt coupling Oil cooler
Hitch	GIANT Standard hydraulic quick change system
Parking brake	Drum brakes
Colour	GIANT yellow / GIANT grey / black

Tyres

31x15.50-15 AS (135 cm)
31x15.50-15 X-TRAC (136 cm)
31x15.50-15 SKID (136 cm)
31x15.50-15 GRASS (135 cm)
33x15.50-15 X-TRAC (140 cm)
15.0/55x17 AS (133 cm)
480/45x17 AS (148 cm)
420/55-17 AS; Not possible in combination with mudguard wideners (140 cm)
425/55-R17 AS (radial) (138 cm)
425/55-R17 Ridemax (radial); Not possible in combination with mudguard wideners (138 cm)
425/40B17 GSP (139 cm)
440/50-R17 AG (radial) (141 cm)
500/40x17.5 Flota 3; Not possible in combination with mudguard wideners (150 cm)
Twin wheels: 11.5/80-15.3 AS (2 pcs); Only possible in combination with 11.5/80-15.3 AS

Electrical / Lighting

Various 12-volt connections
Various work lights available in LED or halogen
Flashing/warning light LED and halogen
Flashers LED

Towbars and counterweights

Shunt coupling (standard) + Tow ball
Counterweight 62 kg (max. 2 pcs) under machine

More information about the G2700 TELE HD+ on the next page



Technical data

Service weight ¹	3.000 kg
Lifting capacity	2.350 kg
Tipping load ²	See chart
Lifting height ^{2, 3}	3.711 mm
Length without bucket	3.680 mm
Width ³	1.140 mm
Clearance height ^{3, 4}	2.340 mm

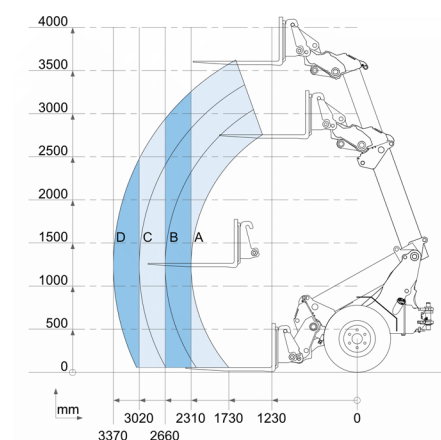
¹ Measured with standard version and earthbucket

² Measured on hinge point in straight position

³ Measured on standard tyres

⁴ Measured with standard safety roof

Tipping loads



	Standard version	With counter-weight 125 kg (option)
A	1.587 kg	1.702 kg
B	1.378 kg	1.478 kg
C	1.214 kg	1.302 kg
D	1.088 kg	1.167 kg

Safetyroof / Cabin

ROPS / FOPS cabine

Hydraulic connections front

Up to 2 additional double-acting hydraulic functions, mechanically operated

Tandem pump, front

- Includes 1x extra single-acting hydraulic function
 - Only possible in combination with free return
 - Max. 60 ltr/min at 150 bar
 - Electrically switchable
-

Additional function

Case drain

Free hydraulic return

Hydraulic connections at the back

Extra double acting hydraulic function, mechanical served

Tandem pump, rear

- Includes 1x extra single-acting hydraulic function
 - Only possible in combination with free return
 - Max. 60 ltr/min at 150 bar
 - Electrically switchable
-

Case drain

Free return

Other options

Pro-inching

STABILO systeem (Patented); Stabilizes the articulated pendulum joint of the machine
