

# PRODUCT INFORMATION

## MODEL G3500 TELE

### Product information

Engine type	Kubota V2403-CR-TE5B (4 cylinder) Stage V
Engine power	66,2 HP / 48,6 kW
Driving mechanism	Hydrostatische vierwielaandrijving met automotiv besturing 14 tons assen met zware planetaire eindaandrijving en 34.000 N trekkracht
Driving hydraulics	112 ltr/min (450 bar)
Working hydraulics	70 ltr/min (220 bar)
Tyres	11.5/80-15.3 AS • <i>Total machine width: 134 cm</i>
Driving speed	2-speed (0-10 km/h, 0-30 km/h) • <i>Automatic gear</i> • <i>Measured on standard tyres</i>
Standard version	ROPS / FOPS safety roof • <i>Incl. safety doors (L+R)</i>  Air suspended seat • <i>Incl. safety belt, armrest and extended backrest</i>  1x Double acting hydraulic function on lifting arm, mechanical  Hydraulic servicebrake on 4 wheels  Working light (halogen) front, on lifting arm  Main switch Shunt coupling Cyclone filter Oil cooler
Hitch	GIANT Standard hydraulic quick change system
Parking brake	Drum brakes
Colour	GIANT yellow / GIANT grey / black

### Tyres

31x15.50-15 AS (147 cm)	
31x15.50-15 X-TRAC (147 cm)	
31x15.50-15 SKID (147 cm)	
33x15.50-15 X-TRAC (147 cm)	
15.0/55x17 AS (152 cm)	
480/45x17 AS (162 cm)	
420/55-17 AS (159 cm)	
440/50-R17 AG (radial) (163 cm)	
425/55-R17 AS (radial) (156 cm)	
500/50R17 Ridemax (163 cm)	
520/50R17 FL637 (165 cm)	
500/40x17.5 Flota 3 (163 cm)	
445/45-R19.5 Kargo (cover) (165 cm)	
445/45-R19.5 GSP (165 cm)	
500/45-20 AS (165 cm)	
Twin wheels: 11.5/80-15.3 AS (2 pcs); Only possible in combination with 11.5/80-15.3 AS	

**More information about the G3500 TELE on the next page.**



### Technical data

Service weight <sup>1</sup>	4.000 kg
Lifting capacity	See chart
Tipping load <sup>2</sup>	See chart
Lifting height <sup>2, 3</sup>	4.312 mm
Length without bucket	4.067 mm
Width <sup>3</sup>	1.340 mm
Clearance height <sup>3, 4</sup>	2.270 mm

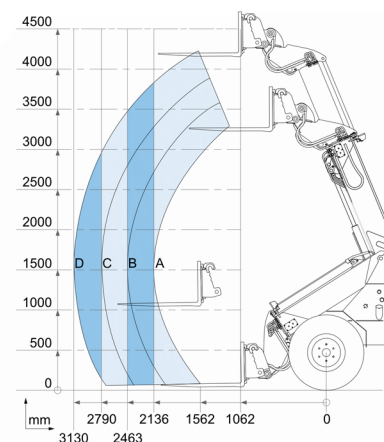
<sup>1</sup> Measured with cabin, driver, full fuel tank and earthbucket

<sup>2</sup> Measured on hinge point in straight position

<sup>3</sup> Measured on standard tyres

<sup>4</sup> Measured with standard safety roof

### Tipping loads



	Standard version	With counter-weight 200 kg (option)
A	1.985 kg	2.175 kg
B	1.721 kg	1.886 kg
C	1.520 kg	1.665 kg
D	1.355 kg	1.484 kg

### Safetyroof / Cabin

ROPS / FOPS cabin

## Hydraulic connections front

---

Up to 2 additional double-acting hydraulic functions, mechanically operated

---

Tandem pump, front

- Includes 1x extra single-acting hydraulic function
- Only possible in combination with free return
- Max. 67 ltr/min at 150 bar
- Electrically switchable

---

Case drain

---

Free hydraulic return

## Hydraulic connections at the back

---

Extra double acting hydraulic function, mechanical

---

Case drain

---

Free hydraulic return

## Towbars and counterweights

---

Shunt coupling (standard) + Tow ball

---

Counterweight (200 kg) under the machine

## Electrical / Lighting

---

Various 12-volt connections

---

Various work lights available in LED or halogen

---

Flashing/warning light LED and halogen

---

Flashers LED

## Other options

---

Pro-inching