

PRODUCT INFORMATION

MODEL G5000 TELE

Product information

Engine type	Kubota V3307-CR-TE4B (4 cylinder) Stage V
Engine power	73,3 HP / 53,8 kW
Driving mechanism	Hydrostatic four wheel drive with automotive control 16 tons axles with heavy planetary end drive and 37.000 N pulling force
Driving hydraulics	145 ltr/min (480 bar)
Working hydraulics	78 ltr/min (250 bar)
Tyres	12.5/80-18 AS • Total machine width: 156 cm
Driving speed	2-speed (0-10 km/h, 0-20 km/h) • Automatic gear • Measured on standard tyres
Standard version	ROPS / FOPS safety roof • Incl. rear window and safety doors (L+R) Air suspended seat • Incl. safety belt, armrest and extended backrest 1x Double acting hydraulic function on lifting arm, mechanical Hydraulic servicebrake on 4 wheels Working light (halogen) front, on lifting arm Main switch Shunt coupling Cyclone filter Oil cooler
Hitch	GIANT Standard hydraulic quick change system
Parking brake	Hydraulic multidisc brake SAHR
Colour	GIANT yellow / GIANT grey / black

Tyres

400/70 R18 Bibload (165 cm)
405/70 R18 EM01 (166 cm)
335/80 R20 Multimax (159 cm)
400/70 R20 Bibload (165 cm)
445/45R19,5 Kargo (170 cm)
445/45R19,5 GSP (170 cm)
500/45R22,5 GSP (175 cm)
500/45-20 AS (173 cm)
500/45-R22.5 Ridemax FL693 (185 cm)
560/45-R22.5 Alliance 885 (191 cm)
600/40-22,5 AS (195 cm)

Electrical / Lighting

Various 12-volt connections
Various work lights available in LED or halogen
Flashing/warning light LED and halogen
Flashers LED

More information about the G5000 TELE on the next page.



Technical data

Service weight ¹	5.200 kg
Tipping load ²	See chart
Lifting height ^{2,3}	4.350 mm
Length without bucket	4.454 mm
Width ³	1.460 mm
Clearance height ^{3,4}	2.523 mm

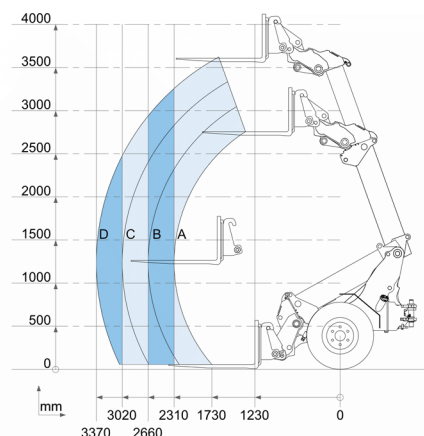
¹ Measured with cabin, driver, full fuel tank and earthbucket

² Measured on hinge point in straight position

³ Measured on standard tyres

⁴ Measured with standard safety roof

Tipping loads



	Standard version	With counter-weight 275 kg (option)
A	2.430 kg	2.680 kg
B	2.110 kg	2.327 kg
C	1.859 kg	2.050 kg
D	1.666 kg	1.837 kg

Safetyroof / Cabin

ROPS / FOPS cabin

Hydraulic connection front

Up to 2 additional double-acting hydraulic functions, mechanically operated

Tandem pump, front

- Includes 1x extra single-acting hydraulic function
- Only possible in combination with free return
- Max. 67 ltr/min at 150 bar
- Electrically switchable

Additional function

Case drain

Free hydraulic return

Hydraulic connections at the back

Extra double acting hydraulic function, mechanical served

Case drain

Free hydraulic return

Towbars and counterweights

Shunt coupling (standard) + Tow ball

Counterweight (275 kg) under machine

Other options

Pro-inching

STABILO systeem (Patented)

- Stabilizes the articulated pendulum joint of the machine