

PRODUCT INFORMATION

MODEL GT5048

Product information

Engine type	Kubota D1803 CR (3 cylinder) Stage V
Engine power	50,4 HP / 37,0 kW
Driving mechanism	Hydrostatic four wheel drive with automotive control 8 tons axles with heavy planetary end drive and 26.000 N pulling force
Driving hydraulics	84 ltr/min (450 bar)
Working hydraulics	51 ltr/min (230 bar)
Tyres	10.00/75-15.3 AS • Total machine width: 160 cm
Driving speed	2-speed (0-7 km/h, 0-25 km/h) • Automatic gear • Measured on standard tyres
Standard version	ROPS / FOPS safety roof • Incl. windows (front and right side) and windscreen wiper (front) Mechanically suspended seat • Incl. safety belt, armrest and extended backrest 1x Double acting hydraulic function on lifting arm, mechanical Hose rupture protection Working light (halogen) front, on lifting arm Main switch Shunt coupling Cyclone filter Oil cooler
Hitch	GIANT Standard hydraulic quick change system
Parking brake	Disk brakes
Colour	GIANT yellow / GIANT grey / black

Tyres

31x15.50-15 AS (160 cm)
31x15.50-15 X-TRAC (160 cm)
31x15.50-15 SKID (160 cm)
31x15.50-15 GRASS (165 cm)

Hydraulic connections front

Up to 2 additional double-acting hydraulic functions, mechanically operated
Tandem pump Power-Flow, front
• Includes 1x extra single-acting hydraulic function
• Only possible in combination with free return
• Max. 51 ltr/min at 230 bar
• Electrically switchable
Case drain
Free hydraulic return

Hydraulic connections at the back

Extra double acting hydraulic function, mechanical operated
Case drain
Free hydraulic return

More information about the GT5048 on the next page.



Technical data

Service weight ¹	2.950 kg
Tipping load ²	See chart
Lifting height ^{2,3}	4.800 mm
Length without bucket	3.135 mm
Width ³	1.600 mm
Clearance height ^{3,4}	1.900 mm

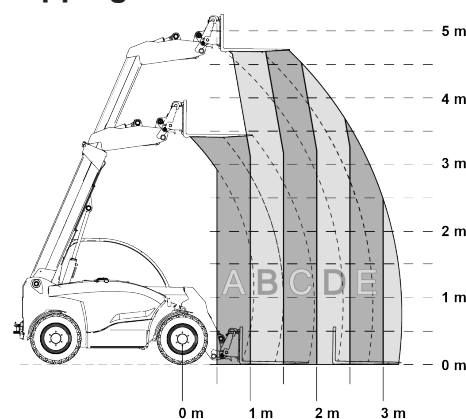
¹ Measured with earthbucket

² Measured on hinge point in straight position

³ Measured on standard tyres

⁴ Measured with standard safety roof

Tipping loads



	Standaard uitvoering	Met contragewicht (optie)
A	2.490 kg	2.870 kg
B	1.670 kg	1.925 kg
C	1.255 kg	1.445 kg
D	700 kg	855 kg
E	585 kg	710 kg

Safetyroof / Cabin

ROPS / FOPS cabin

Electrical / Lighting

Various 12-volt connections
Various work lights available in LED or halogen
Flashing/warning light LED and halogen

Towbars and counterweights

Counterweight (180 kg) + Shunt coupling (standard)

Other options

Pro-inching
